

Accountability Report

Issued 2016–17

Lanier Middle School

Todd Hamilton, *Principal*

Peggy Goodman, *Assistant Superintendent*



Local school improvement connected to district's strategic direction

Gwinnett County Public Schools' accountability system for improving schools is called the Results-Based Evaluation System (RBES). RBES fairly and systematically measures a school's progress, providing a process that clearly communicates expectations; reviews, monitors, and supports school performance; and evaluates that performance. This report reflects achievement data and state data reporting from the 2015–16 school year, as well as consolidated information on the school's effectiveness, based on multiple measures and student characteristics. Based on the data you will find in this report, school administrators,

teachers, and parent advisory groups developed this year's Local School Plans for Improvement (LSPI) which outline our improvement goals and guide the work we will do throughout the 2016–17 school year to support student learning. These improvement plans are connected to the school district's strategic direction and our core business of teaching and learning. Find our school's LSPI on the website. The Lanier council and school leaders collaborated on the highlights in this accountability report, which also serves as the school's annual report. **Please review this report to learn more about our improvement efforts and progress.**

CONTENTS

About School Improvement and the School Effect

2015–16 Results

2015–16 State Reporting

2015–16 Highlights

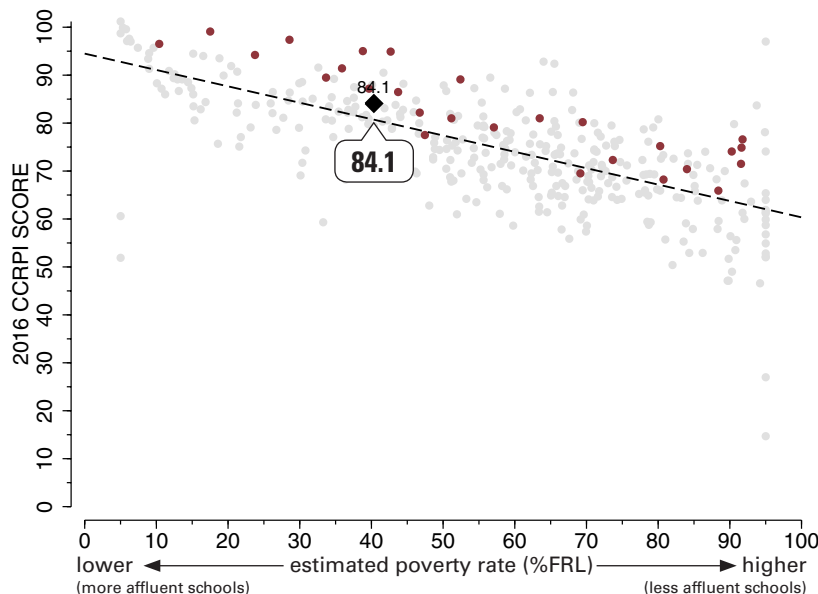


The School Effect: Putting Lanier Middle School's CCRPI score in context

The “school effect”—the impact of what happens in the classroom—acknowledges the work of our faculty and staff in meeting our students where they are academically, and helping them to make progress, no matter where they start. Schools all strive to add value to a child's education from year-to-year, causing students to make academic gains. One way to measure effectiveness in educating *all* students is to review a school's score on Georgia's College and Career Ready Performance Index (CCRPI), adjusting for the level of economic diversity at the school, to see the school effect on students' academic growth.

This graphic representation plots CCRPI scores for middle schools in the state (gray dots) against the percentage of the student population receiving free-and-reduced-lunch (FRL Percentage), a measure of poverty. The plotted points form a trend line representing the typical achievement level of a school in Georgia with its level of student poverty. The graph shows how Lanier (represented by a large black diamond) and all GCPS middle schools (maroon dots) fare when considering expected performance based on poverty measures. Dots above the line are higher-than-expected scores and dots below the line reflect lower-than-expected scores.

Note: Georgia schools that serve breakfast and lunch to all students at no cost are not included in this comparison.



2015–16 Results: Georgia Milestones Assessment System

Georgia Milestones for Grades 6, 7, and 8

Last spring, Gwinnett students joined students across Georgia in taking state assessments called Georgia Milestones. Beginning in 2014–15, Georgia Milestones took the place of the Criterion-Referenced Competency Tests (CRCT) for Georgia students. This comprehensive assessment system measures how well students have learned the knowledge and skills outlined in the state-adopted content standards for English language arts, mathematics, science, and social studies. Students in grades 3 through 8 took an End-of-Grade (EOG) assessment in May of 2016.

The higher bar for student proficiency set by Georgia Milestones is aimed at better preparing students for college and career and providing a more realistic picture of academic progress. As with any new assessment, we anticipate that scores will initially be lower than they will be in future years as students and teachers become more accustomed to the new test and its format. That is one reason why the results from this past year were not used to determine promotion for 2015–16. (In addition, the State Board of Education waived the use of Milestones results for promotion decisions due to the potential impact of technical difficulties with online testing in other parts of the state.)

With the 2017 administration of Milestones, the Georgia Department of Education expects districts to be able to use results for some subjects at selected grade levels to determine placement under state and local promotion requirements.

To learn more about Georgia Milestones, visit testing.gadoe.org and click on Georgia Milestones Assessment System.

About Milestones Achievement Levels

The Milestones results are reported using four categories of achievement, described below. In previous state tests, achievement was reported in three categories (Does Not Meet, Meets, and Exceeds). Under the new system of reporting, proficiency is the target.

The tables on this page show the percentage of students who achieved at the level of **Proficient Learner** or higher. Students who achieve at the Developing Learner or Beginning Learner need additional academic support to succeed at the next grade level.

Distinguished Learner: Student demonstrates advanced proficiency, and is **well prepared for the next grade level** and for college and career readiness.

Proficient Learner: Student demonstrates proficiency, and is **prepared for the next grade level** and considered to be on track for college and career readiness.

Developing Learner: Student demonstrates partial proficiency, and **needs additional academic support** to ensure success in the next grade level.

Beginning Learner: Student does not yet demonstrate proficiency, and **needs substantial academic support** to be prepared for the next grade. (In the future, when these assessments are used to determine promotion, students in this level will not be promoted to the next grade.)

English Language Arts

Grade	Lanier MS	GCPS	Georgia
6th	56.9	49.6	39.2
7th	56.5	49.1	38.5
8th	63.2	55.7	43.9

Mathematics

Grade	Lanier MS	GCPS	Georgia
6th	53.3	51.9	38.3
7th	64.6	57.3	42.2
8th	55.8	50.1	40.3

Science

Grade	Lanier MS	GCPS	Georgia
6th	60.9	48.7	38.5
7th	57.3	53.0	39.3
8th	53.4	41.1	33.8

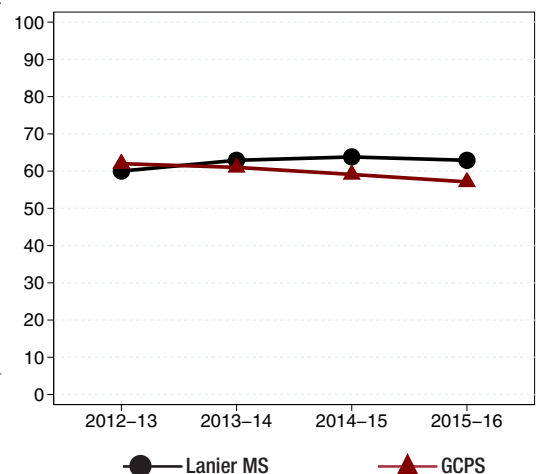
Social Studies

Grade	Lanier MS	GCPS	Georgia
6th	54.4	46.6	33.4
7th	66.2	55.7	38.8
8th	60.3	53.5	37.7

The tables on this page show the percentage of students who achieved at the level of Proficient Learner or higher. At Lanier Middle, Milestones results for 8th Grade Math and Science are based on a combination of EOG and High School End-of-Course (EOC) results.

2015–16 Results: Norm-referenced Assessments: The Iowa Assessments

The Iowa Assessments measure a student's progress in key academic areas and allow for a comparison of their performance to that of students across the U.S. This nationally norm-referenced test was administered in Gwinnett in grades 2, 5, and 8 in 2015–16. Results from the fall administration help identify students' areas of academic strength as well as areas that need improvement. Teachers and schools use these results during the school year to inform instruction and monitor growth. The Complete Composite results to the right reflect overall performance on tests covering a variety of skill areas, including reading, spelling and other language arts conventions, vocabulary, mathematics, science, and social studies. This graph shows the average national percentile rank (NPR) of 8th graders' Complete Composite scores at Lanier Middle and for GCPS as a whole over the last four years. As an example, a Complete Composite NPR of 60 indicates that, on average, students scored as well as or better than 60% of U.S. students on the test. An NPR of 50 is the national average.



State Reporting: Georgia’s 2014–15 College and Career Ready Performance Index (CCRPI)

College and Career Ready Performance Index (CCRPI) is Georgia’s statewide accountability system. CCRPI assesses how well students are prepared for college and careers and ensures that schools are focused on improving achievement among all students.

The index measures progress on accountability indicators such as content mastery, student attendance, and preparation for the next school level. Schools earn CCRPI points based on indicators that vary by grade and school level and align with measures of college- and career-readiness. Schools may earn up to a set number of points in three main categories (achievement, progress, and achievement gap), for a total of 100 possible points, with an additional 10 possible challenge points.

At the middle school level, schools earn CCRPI achievement points tied to a number of factors, including the percentages of students meeting or exceeding standards on state assessments, the percentage of students reading at grade level, the percentage of students missing six or fewer days during the school year, the percentage of students learning English who are making academic progress, the percentage of students with disabilities who participate in the general education setting, and the percentage of students scoring in the Proficient Learner or Distinguished Learner achievement levels on the Georgia Milestones assessment.

Progress points are tied to the level of academic progress students make from year to year, while achievement gap points are earned as schools work to close the gaps between student subgroups. Challenge points reflect a school’s participation levels and achievement results for students with economic disadvantages (ED), English learners (EL), and students with disabilities (SWD).

In addition, schools may earn challenge points when they “exceed the bar” for participation levels in advanced classes, world languages, fine arts, and career awareness. Schools in which teachers use data for planning individualized instruction and those with STEM certification may earn extra points as well. Innovative practices with demonstrated achievement gains as well as interventions that result in a positive school climate also may earn challenge points.

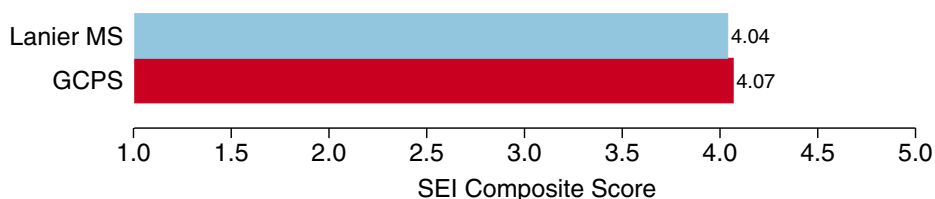
Lanier MS CCRPI Total Score		84.1
Achievement Points		36.8
Progress Points		36.5
Achievement Gap Points		6.7
Challenge Points		
ED/EL/SWD Performance–3.6		4.1
Exceeding the Bar–0.5		
<i>CCRPI Total Score is the sum of points in shaded cells.</i>		
School Climate Rating		NA
Financial Efficiency Rating		NA
<i>The 2015–16 star ratings were not available at the time CCRPI was released. Once available, they can be found on the GaDOE website in the CCRPI section.</i>		

Star Ratings

The School Climate rating, which awards stars on a five-star scale, takes into account discipline data, attendance, and perceptions of the quality and character of the school and its learning environment. New for 2015–16, the Financial Efficiency star rating is a measure of the cost effectiveness of a school, comparing the school’s spending per pupil to the overall academic achievement of its students. Ratings range from a half-star to five stars. A half-star indicates high spending per student (in the top 20% statewide) with low CCRPI scores (below a 50), while a five-star rating indicates lower levels of spending per student (in the bottom 20% in Georgia) with high CCRPI scores (90+ on average). The rating is calculated using three-year averages of spending and CCRPI scores. The School Climate and Financial Efficiency ratings for 2015–16 were not published at the time CCRPI results for the year were released in fall of 2016. Once available, parents can find them here: <http://www.gadoe.org/CCRPI/Pages/default.aspx>

Student Engagement

The Student Engagement Instrument (SEI) is a survey used to measure how engaged students are at school and with learning. When taking the SEI, students respond to items that cover a variety of topics related to their engagement in their education, including the level of support they receive from teachers, peers, and family, as well as their perceptions of school work and future educational goals. We measure student engagement at GCPS because it is related to important outcomes such as on-time graduation and postsecondary success. The bar graph below shows the average SEI Composite Score—a summary of a student’s responses across all items on the SEI—for Lanier Middle School compared with results for all GCPS middle schools. The Composite Score can range from 1.0 to 5.0, with higher scores reflecting stronger student engagement.



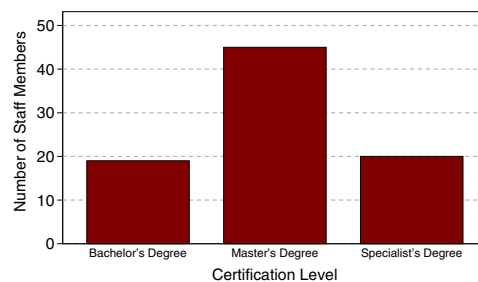
Lanier Middle School

Other 2015–16 Highlights...

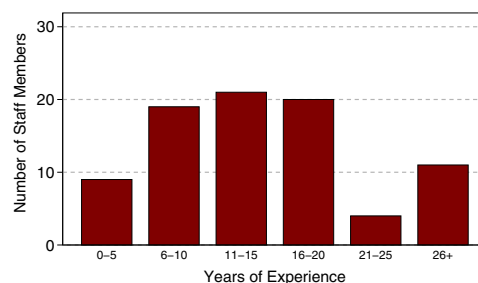
- Lanier Middle School was named a 2015–16 Breakout School by the Georgia Association of Secondary School Principals for the school's work in the areas of STEM, project-based learning, and advisement.
- For the ninth consecutive year, Lanier Middle School was recognized as a Reaching Higher Green & Healthy School in the Environmental Achievement Awards sponsored by Gwinnett Clean & Beautiful.
- The Lanier Cluster schools won Gwinnett County Public Schools' Innovation and Transformation Award for their outstanding work in the areas of STEM and Project-Based Learning. The Lanier Cluster Schools shared a \$140,000 grant to support these areas of focus.
- Lanier Middle School teachers received five out of the 16 grants awarded to GCPS schools by Jackson EMC to support STEM and project-based learning initiatives. The five grants totaled in the amount of \$7,373.83.
- Lanier Middle School won a grant from the Captain Planet Foundation. Proceeds from this grant helped the school establish a school garden to supplement the outdoor classroom.
- The students, faculty, and staff of Lanier Middle School raised \$10,036.10 in the school's Relay For Life campaign to help fight cancer, fund research, and support those battling the disease.
- The Lanier Middle School PTSA sponsored the 2nd annual Color Stampede 5K, raising more than \$4,000 for technology for the school.
- The Lanier Middle School choral groups earned five Superior ratings and one Excellent rating for their performances at Large Group Performance Evaluation (LGPE), sponsored by the Georgia Music Educators Association (GMEA).
- Our 7th and 8th Grade Orchestras both earned Superior ratings for their performances at LGPE. Four soloists and seven ensembles earned Superior ratings for their GMEA performances.
- The artwork of two Lanier Middle School students was displayed at the state capital building for the annual Capitol Art Exhibit, cosponsored by the Georgia Art Education Association and the Office of the Secretary of State during Youth Art Month.
- The Lanier Middle School robotics team took home a trophy and recognition for Gracious Professionalism in Core Values at the first LEGO League Qualifier held at Creekland Middle School.

2015–16 Staff Data

Staff Certification Level



Experience in Education



Student Data (2013–14 to 2015–16)

	School Year		
	13-14	14-15	15-16
Enrollment	1379	1353	1408
+American Indian/Alaskan Native*	0%	0%	0%
+Asian*	7%	6%	7%
+Black/African American*	18%	18%	18%
+Hispanic or Latino, <i>any race</i>	25%	25%	25%
+Multiracial, <i>two or more races</i> *	4%	5%	5%
+Native Hawaiian/Pacific Islander*	0%	0%	0%
+White*	46%	47%	46%
Special Education	15%	15%	13%
ESOL	6%	4%	4%
Free/Reduced Lunch	46%	47%	40%
Average Attendance	97%	97%	96%

*Not Hispanic or Latino

School Safety Perceptions

Based on responses from those with an opinion who responded to the 2015–16 RBES Perception Survey...

- 91.3% of students agreed or strongly agreed that they felt safe at Lanier Middle.
- 92.9% of parents agreed or strongly agreed that their child's school was safe.

The mission of Gwinnett County Public Schools is to pursue excellence in academic knowledge, skills, and behavior for each student, resulting in measured improvement against local, national, and world-class standards.

Lanier Middle School

6482 Suwanee Dam Road, Sugar Hill, GA 30518
(770) 945-8419 • <http://www.lanierms.org/index.html>
Todd Hamilton, Principal

Gwinnett County Public Schools

437 Old Peachtree Rd., NW • Suwanee, GA 30024-2978
www.gwinnett.k12.ga.us

2016 Gwinnett County Board of Education

Dr. Robert McClure, 2016 Chairman;
Louise Radloff, 2016 Vice Chairman;
Carole C. Boyce; Dr. Mary Kay Murphy; and Daniel D. Seckinger
J. Alvin Wilbanks, CEO/Superintendent